

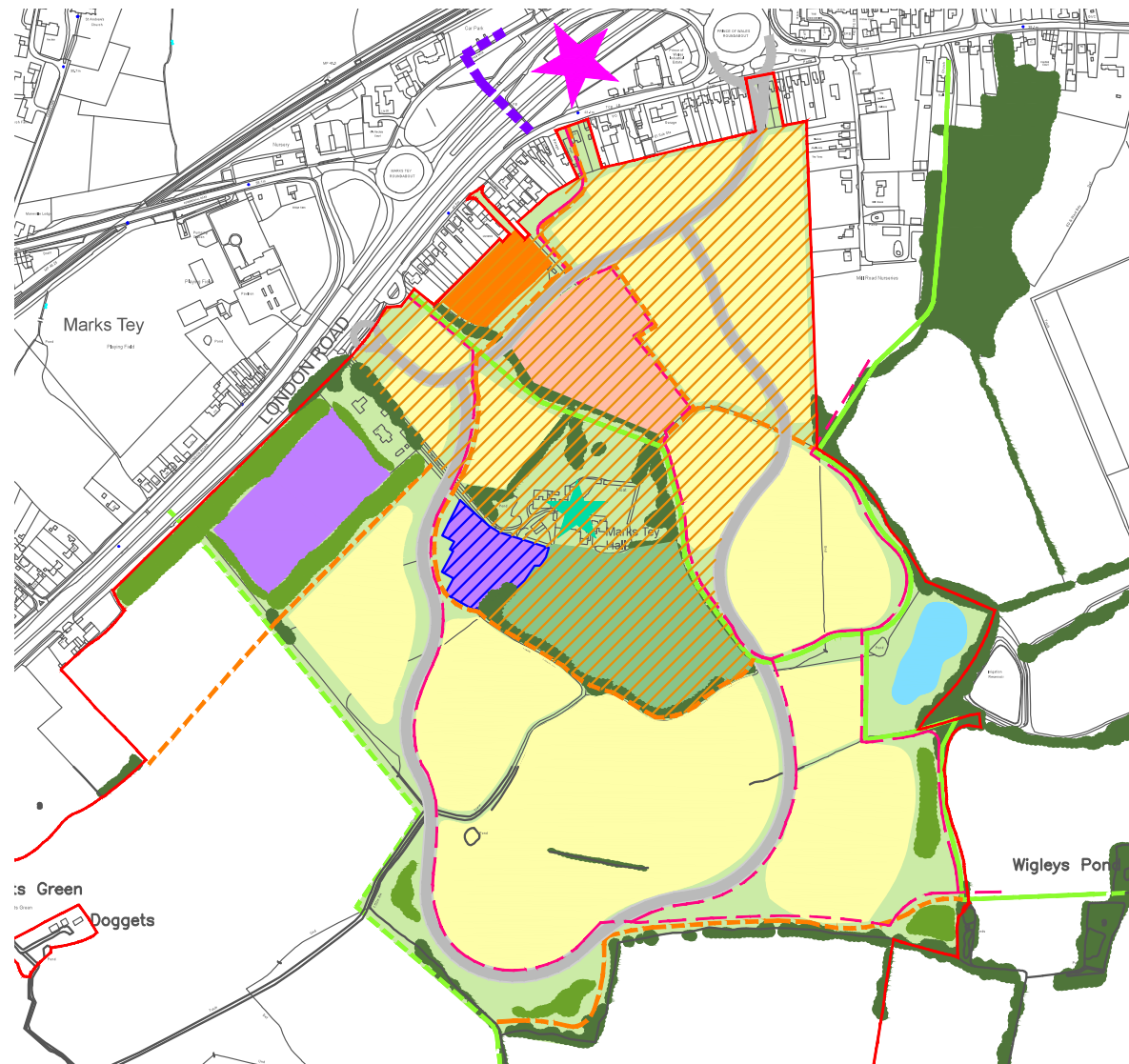
Transport - Rail



Transport – Network Rail improvements

- Control Period 6 (2019-24)
- Additional platform capacity at Liverpool Street
- Increase linespeed to 110mph+ on GEMML north of Shenfield
- Increased headways Stratford-Chelmsford
- Passing loop north of Witham
- 3 extra trains per hour in peak periods
- All peak period trains 12 coaches
- Passing loop on Sudbury branch (2 trains/hour)

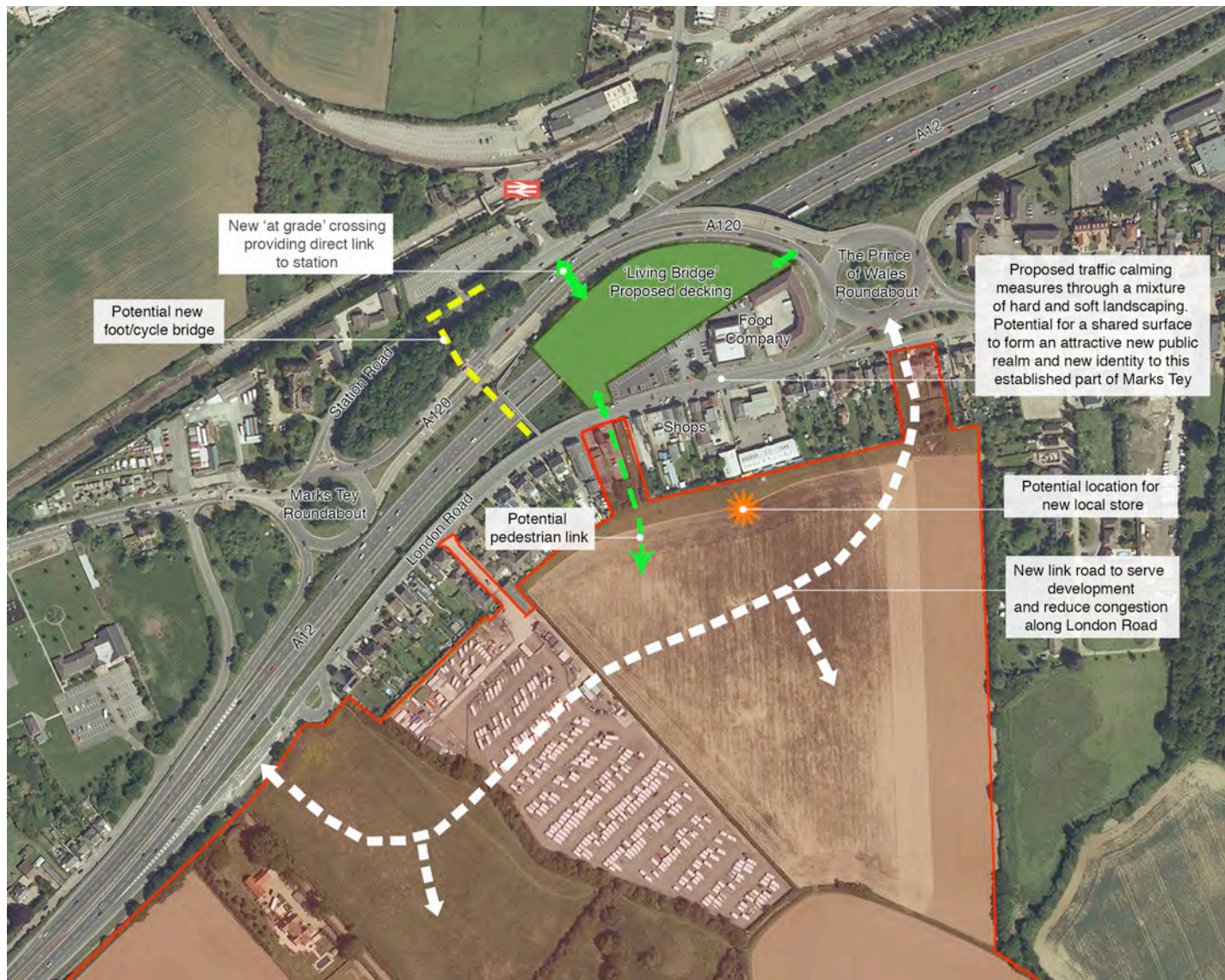
Transport - Proposals (Phase 1)



Transport - Proposals (Phase 1)

- Main access - enlarged Prince of Wales Roundabout
- 2nd access from London Road west
- Improvements to Marks Tey Roundabout
- Enhanced pedestrian links to station
- Link through site to relieve London Road
- More parking at rear of shops on London Road

Living Bridge



Living Bridge - Examples



Tunnel on the A1(M) at Hatfield where The Galleria shopping centre sits above it.



Wide footbridge over Paradise Circus in Birmingham which provides a pedestrian walkway from the city centre to the Symphony Hall.

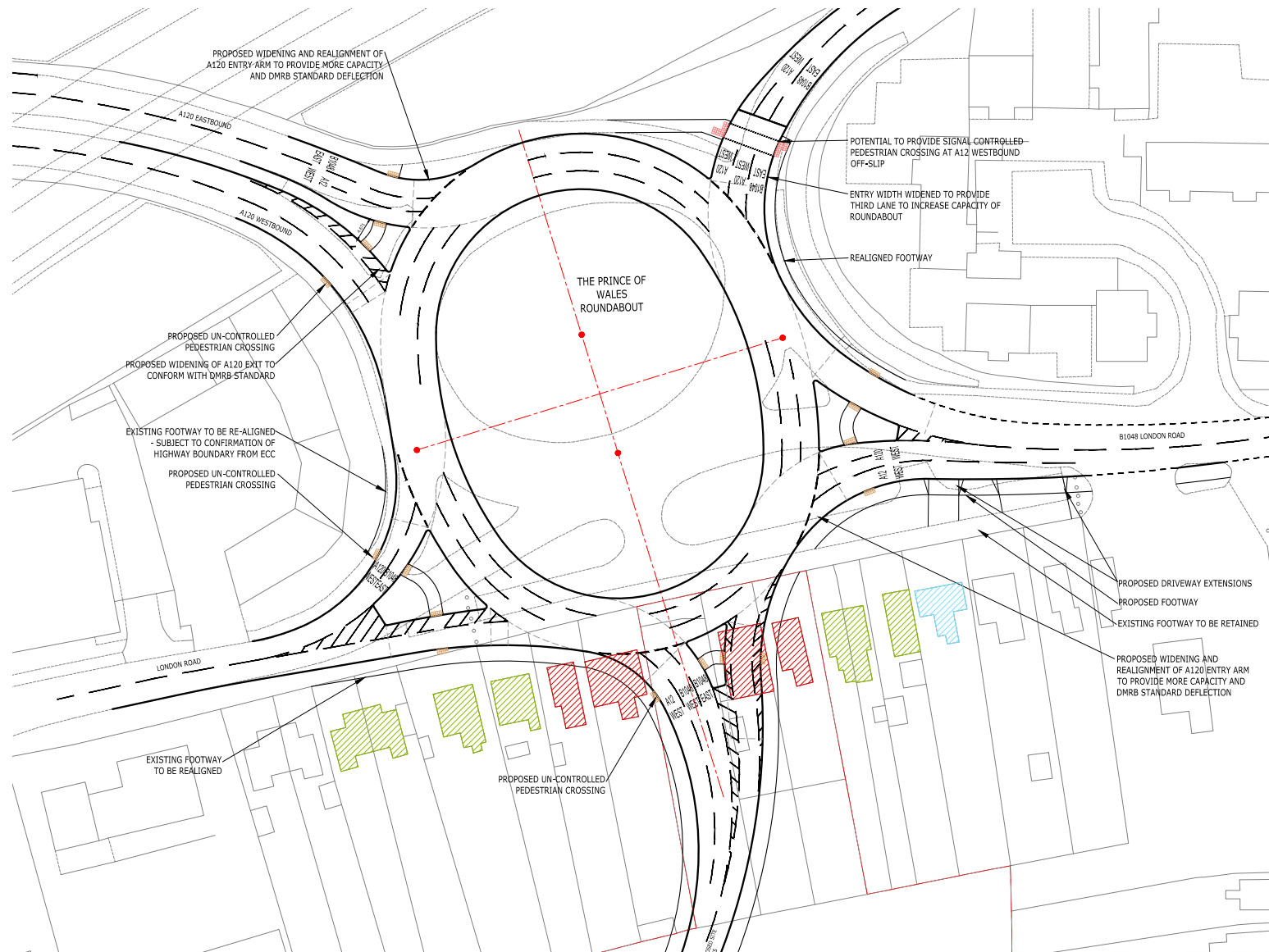


Holmesdale Tunnel on the M25 at Waltham Cross which has a park above it

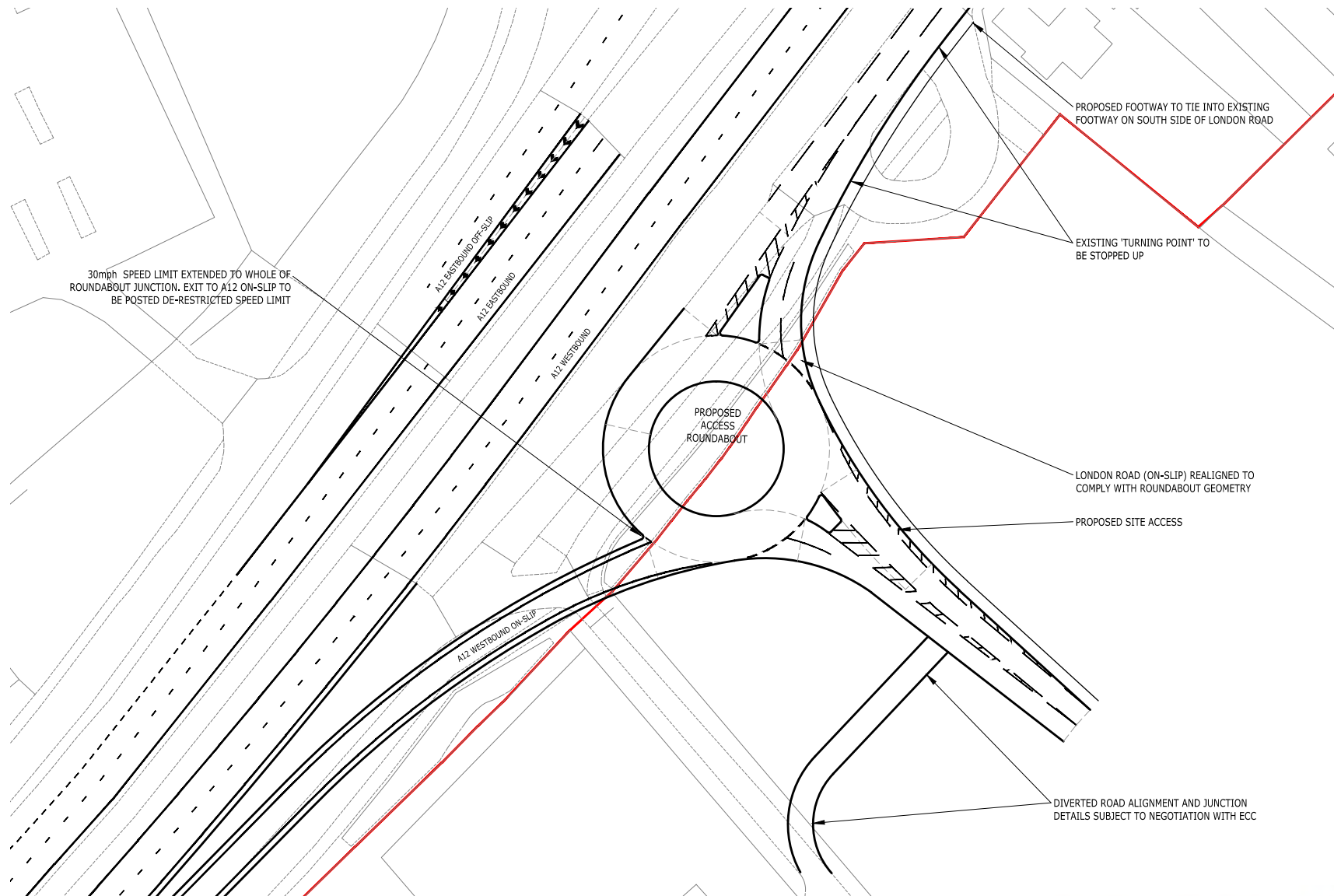


Bell Common Tunnel on the M25 at Epping which has a cricket pitch above it

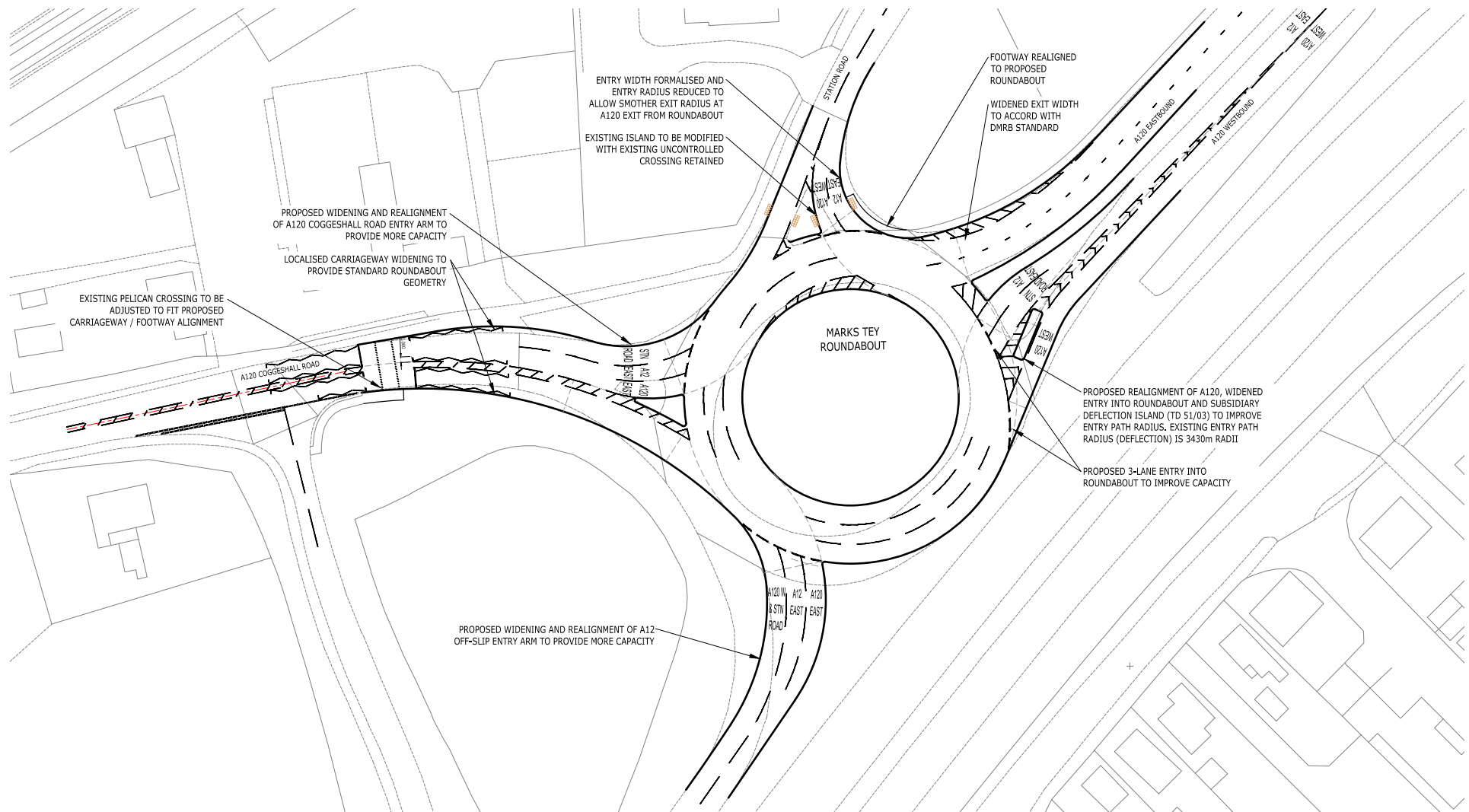
Transport - Prince of Wales Roundabout



Transport - London Road west access



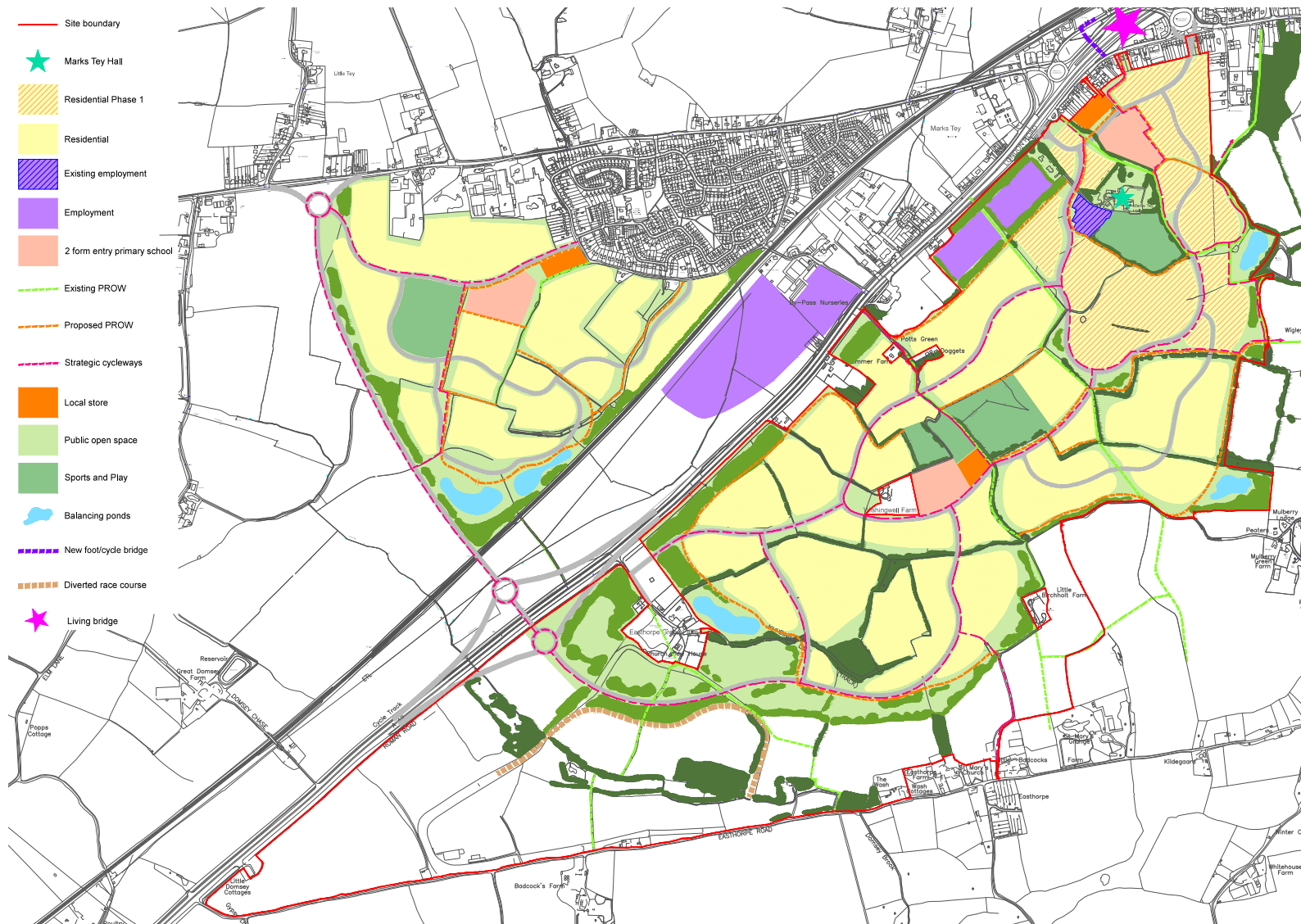
Transport - Marks Tey Roundabout



Transport - Longer term proposals (Phase 2)

- Further development to south west
- New A12/A120 Junction 25A
- A120 diverted west of Marks Tey
- Reduced traffic - Prince of Wales and Marks Tey roundabouts and Coggeshall Road
- A120 dualled Braintree – Marks Tey

Transport - Longer term proposals (Phase 2)



Transport - Rail



Transport – Rail opportunities

- Increase number of trains stopping at Marks Tey
- Upgrade station – new footbridge, expanded ticket office, waiting facilities etc
- Park & Ride – decked station car park