

Castledon School

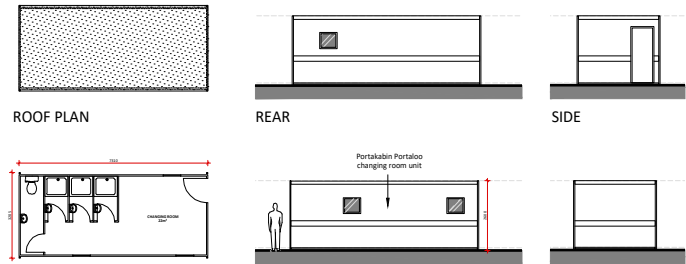
Wickford

Client: Castledon School

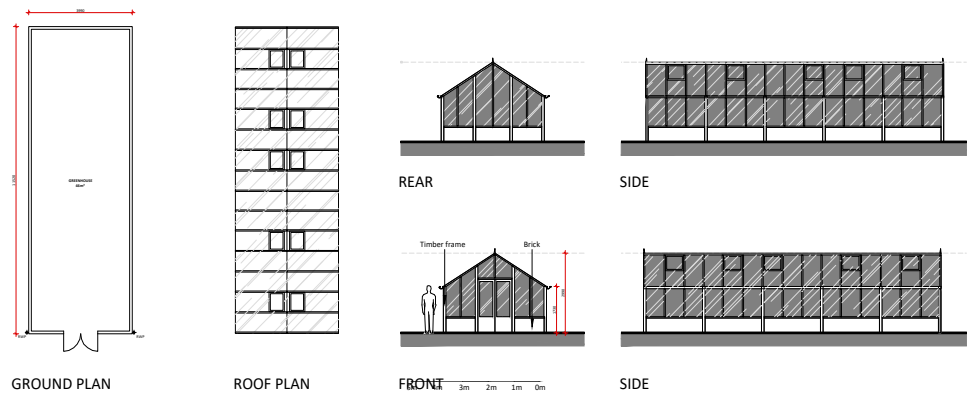
Castledon School is an Academy Status Special Educational Needs (SEN) School. Due to the predicted rise in demand for places in the District and the complex teaching challenges for teaching children with special needs, additional teaching provision is desperately required. However, the school is located with the Green Belt which makes expansion difficult. In accordance with the NPPF, extensions to school buildings in the Green Belt are considered 'inappropriate', unless 'very special circumstances' can be demonstrated.

Working closely with the school and the Local Education Authority, AM-P successfully demonstrated 'very special circumstances' to enable the school to expand into the Green Belt. This has enabled the school to increase teaching space for practical learning through Lifeskills and Vocational programmes.

02 & 03 - MALE & FEMALE CHANGING ROOMS



01 - GREENHOUSE



04 - SUMMER HOUSE

