

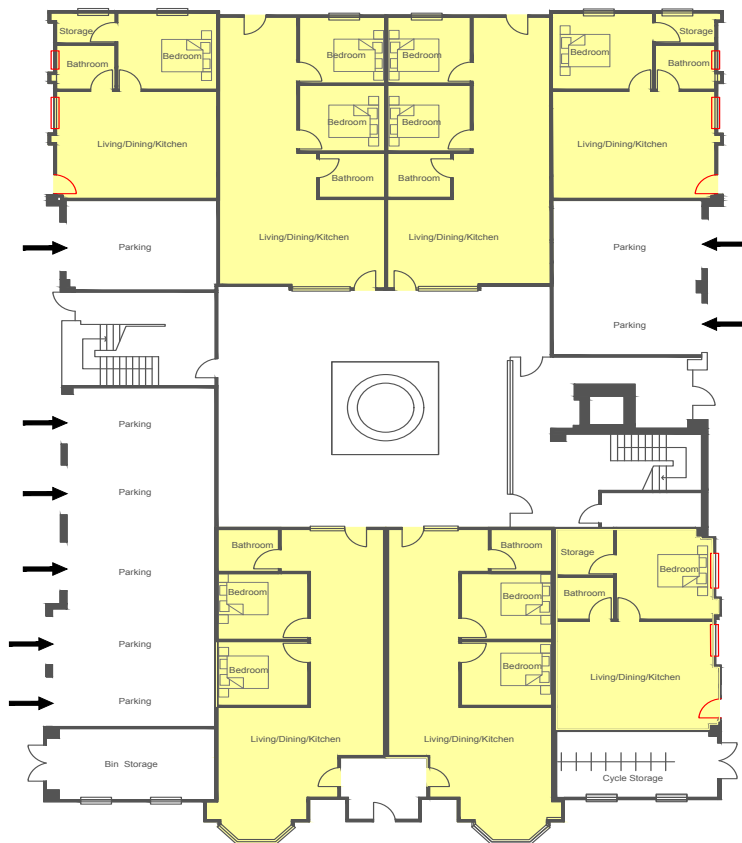
Park View House

Great Yarmouth

Client: Orbit South Housing Association

Park View House is a 3-storey building, comprising 16 residential units to the first and second floor, together with office space and undercroft parking/storage areas to the ground floor. An application was submitted for alterations and part change of use of the ground floor to create a further 7 apartments.

Park View House is located in Great Yarmouth towards the northern end of Southtown Road. The building is owned by Orbit who are one of the UK's largest developing housing associations who manage around 39,000 homes throughout the country.



NORTH ELEVATION



SOUTH ELEVATION



EAST ELEVATION



WEST ELEVATION